

Chickasaw Electric Cooperative

**LINE CLEARANCE
POLICY**



POLICY:

The right-of-way for Chickasaw Electric Cooperative's distribution lines shall be of such width as may be determined for adequate construction, operation, and maintenance. Right-of-way width is normally thirty (30) feet centered on the pole line. At the Cooperative's discretion, this may be reduced for secondary and/or underground lines.

Initial construction shall not preclude the addition of future construction within an existing right-of-way. This would include guys, anchors, poles, etc.

Within and beyond the right-of-way, no structures shall be erected which are in violation of the National Electric Safety Code and the National Electric Code line clearance requirements.

In all cases, the Cooperative shall endeavor to keep the right-of-way clear along all of its primary utility lines.

Before any line is built and/or moved for new electrical service(s), the new customer or developer must secure and record, if required, all necessary easements. Prior to construction, the newly acquired right-of-way must be cleared by the new customer or developer at no cost to the Cooperative. After construction, right-of-way will be maintained by the Cooperative.

A. PROPOSED POWER LINES (For New Customers)

1. All trees and underbrush will be cut down even with the surface of the ground a distance of 15 feet horizontally from each side of the center of the pole line, creating a clear corridor 30 feet wide.
2. All trees outside the above mentioned 30 feet wide corridor, the branches of which extend into the corridor, will be side trimmed to maintain a constant 15 foot horizontal clearance on each side of the pole line and projected up ward, creating a 30 foot wide clear corridor through the ceiling of the tree canopy.
3. CEC will be responsible for final inspection of a customer's clear corridor.

B. EXISTING POWER LINES

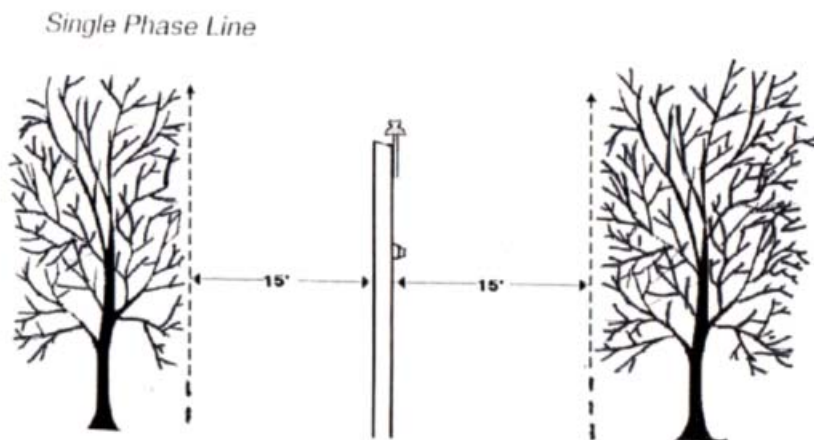
1. Right-of-way clearing along lines on private property will be maintained as described above. It shall be the land owner's responsibility to clean up resulting debris.
2. Right-of-way clearing along lines on public property, State and County road easements, etc., will be maintained as described above. The Cooperative will remove debris.
3. In residential yards, where optimum clearing may not be feasible, trees will be cut and trimmed as deemed necessary by the Cooperative. Debris will be cleaned up by the Cooperative
4. If a customer requests the Cooperative to take down trees which pose a potential threat to buildings, equipment, etc., the Cooperative may require the customer or someone procured by the customer to do the work. In such case, the Cooperative at a mutually agreed time will temporarily remove any lines which would interfere with said work.

C. CUSTOMER TREE TRIMMING

1. The customer shall consult with the Cooperative when trees to be cut are near existing lines. If damage to existing lines and/or a safety issue is in question, the Cooperative may assist the customer.
2. Customers who trim their own trees around power lines must do so in accordance with the guidelines contained herein.

D. LINE CLEARANCE BEYOND COOPERATIVE RIGHT-OF-WAY

As so determined, dead trees, danger trees and leaning trees may be cut or topped so as to remove any hazard to the service, secondary or distribution line(s).



E. CLEARANCE FOR METERS

1. Customers are responsible for providing access and maintaining a minimum clearance of 3 feet in front and to either side of an electric meter.
2. When necessary Cooperative crews will remove obstruction to obtain the required clearance to perform work.

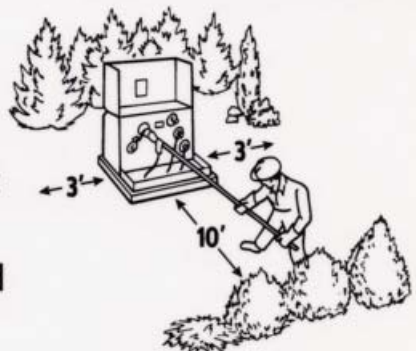
F. Clearance for Pad Mounted Transformers and Switching Cabinets

1. Customers should keep the front and sides of pad mounted transformers and switching cabinets clear of fences, shrubs, and structures a minimum of 10 feet on the front and 3 feet on either side. This distance may be greater for large three phase units.
2. When necessary Cooperative crews will cut or remove fences, shrubs, and/or structures to obtain a clearance distance of 10 feet on the front and 3 feet on either side of a pad mounted transformer or switching cabinet.

We need room to work safely on this device.

Please maintain a distance of 10 feet from the front and 3 feet from the sides.

Obstructions may be damaged or removed.



G. EMERGENCIES

During emergencies or major outages, trees will be cut to obtain the necessary clearance to restore electric service. It will be the property owners/customer's responsibility to remove tree debris. The Cooperative does not remove debris from emergencies.

H. LIMITATION

The Cooperative's employees or their assigns shall have the right of ingress/egress to Cooperative's facilities for inspection, routine maintenance, and right-of-way maintenance.



If you have questions concerning
Chickasaw Electric Cooperative
Line Clearance Policies, contact us at:



P.O. Box 459,
17970 Highway 64 East,
Somerville, TN 38068



901-465-3591



CECPowerUp.com



info@
chickasaw.coop



CECPowerUP
CEC Mobile App



Chickasaw Electric
Cooperative



Chickasawcoop



ChickasawECoop



Chickasaw Electric
Cooperative



Chickasaw EMC

